



NEXUS
SEALAND TRADING PTE LTD

SUPPLY &
DISTRIBUTION

Modular Scaffold System



明 光 集 團
BENG KUANG GROUP

About Us

Nexus Sealand Trading Pte Ltd has been in the Supply & Distribution operations for more than 13 years. Establishing itself as one of the frontrunners in the hardware supplies business, it makes its supplies to the marine, onshore/offshore, oil & gas and construction industries.

Evolving over the years from its humble beginnings as a purchasing department to a fully fledge supply and distribution base which provides a plethora of goods and hardware through its inventories, NST caters to an extensive list of local clientele from a myriad of business practices and industries.

All Round (AR) Modular Scaffold System

The AR Scaffold System is one that provides savings in labour costs while simultaneously meets stringent safety requirements. The system has a simple connection device with a rosette and wedge making it easy to assemble and dismantle if necessary.

The key to the stability of the AR system is the tight connection between wedge locks and the ring.

In the AR system, the lateral side forces on the verticals are transferred to the horizontals and diagonals thus achieving maximum loading and even distribution of loads throughout the scaffold.

Benefits of the All Round Scaffold System

- **Effective**

The AR system is easy to use and requires less skill on the part of the scaffold erector. Ease of storage and transport saves valuable storage space and costs. Achieving the desired results for the formwork engineer in shoring applications makes this a flexible and highly desirable support system.
- **Productive**

The AR system helps you achieve high productivity, a value much sought after in project management. Component and system integration are a result of adoption of the appropriate design features as well as paying attention to the needs of the erector and user of the system. When erected correctly, structures can be completed with both higher precision and speed compared to traditional scaffolding materials.
- **Flexible**

The AR system offers unlimited flexibility with its unique connection technology. It can provide a whole range of solutions to suit your needs. Access, shoring, performance stages, spectator stands, lighting towers, mobile scaffolds, temporary bridges, façade screenings and a host of other applications can be completed both safely and efficiently. The system provides opportunities limited only by imagination.
- **Competitive**

A crucial factor for success in the modern-day business environment is remaining competitive and always being relevant to clients' needs. It means ensuring that training and retaining a highly skilled workforce does NOT become the pitfall in operational and business planning. It also means being efficient, being able to achieve more with less. The AR system with its unparalleled versatility, ease of assembly and economic advantages can help you achieve just that.

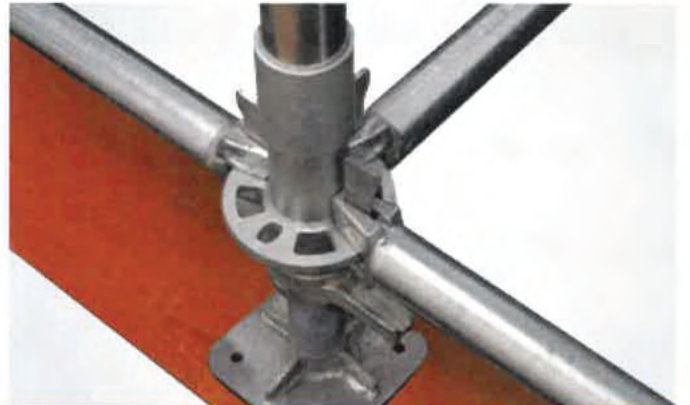
Erection Instructions



1 Lay sole plate and adjustable jack base at the interval determined by the intervals of horizontal member (bay size). Slot in base collar to all jack bases.



3 Level the base from higher point of the ground by adjusting the handle of the adjustable jack base. Secure ledger to base collar by knocking down wedges of all connection using hammer.



4 Install the standards to all base collar, followed by all ledgers and transoms for the next lift.



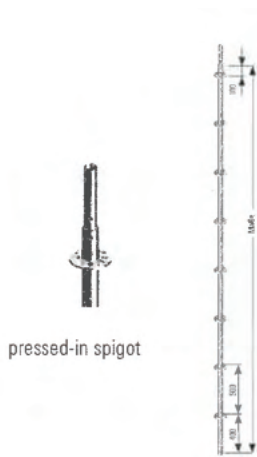
2 Connect all base collar with ledgers by using the small holes of the rosette for right-angle connection.



5 Install diagonal braces by connecting the brace to the big holes of the rosette.

RINGLOCK

Standards



pressed-in spigot

STANDARD WITH CRIMPED SPIGOT

The Standard with Crimped Spigot is the vertical member of Ringlock scaffolding that utilises a crimped spigot. The Rosettes are located at fixed increments of 0.5m for attaching horizontal Transom/Ledgers and Diagonal Braces.

| Standard with Crimped Spigot | | | |
|------------------------------|-------------|--------|--------|
| Product | | Height | Weight |
| Part No. | Description | Meters | Kg |
| S0501 | Standard 01 | 0.5 | 3.2 |
| S0101 | Standard 02 | 1 | 5.63 |
| S0151 | Standard 03 | 1.5 | 7.94 |
| S0201 | Standard 04 | 2 | 10.3 |
| S0251 | Standard 05 | 2.5 | 12.01 |
| S0301 | Standard 06 | 3 | 15.03 |
| S0401 | Standard 08 | 4 | 19.9 |



new integrated spigot with cross hole

STANDARD WITH HANGING SPIGOT

The Standard with Hanging Spigot is a vertical member of the Ringlock scaffolding. It provides the vertical support for suspended scaffolding.

| Standard with Cross Hole Spigot | | | |
|---------------------------------|-------------|--------|--------|
| Product | | Height | Weight |
| Part No. | Description | Meters | Kg |
| SS0501 | Standard 01 | 0.5 | 2.3 |
| SS0101 | Standard 02 | 1 | 6.4 |
| SS0151 | Standard 03 | 1.5 | 8.03 |
| SS0201 | Standard 04 | 2 | 10.3 |
| SS0251 | Standard 05 | 2.5 | 13.6 |
| SS0301 | Standard 06 | 3 | 15 |
| SS0401 | Standard 08 | 4 | 19.6 |

RINGLOCK

Base

BASE JACK

The Base Jack is used as a starting base for a scaffold. It is adjustable in height to allow for compensation on uneven surfaces so that a level scaffold is always attainable.



| Base Jack | | | |
|-----------|-------------|--------|--------|
| Product | | Height | Weight |
| Part No. | Description | Meters | Kg |
| BJ060 | Base Jack | 0.6 | 3.87 |

SWIVEL JACK

The Swivel Jack is similar to the Base Jack but is designed to be adjustable not only in height, but also in angle to attain a level scaffold.



| Swivel Jack | | | |
|-------------|-------------|--------|--------|
| Product | | Height | Weight |
| Part No. | Description | Meters | Kg |
| SJ060 | Swivel Jack | 0.8 | 6.03 |

CASTOR

The Castor is designed to provide mobility to a medium to large sized scaffold tower. It allows the tower to roll across flat surfaces.



| Base Collar | | | |
|-------------|-------------|--------|--------|
| Product | | Height | Weight |
| Part No. | Description | Meters | Kg |
| BC0270 | Base Collar | 0.31 | 2.44 |



| Adapter For Castor | | | |
|--------------------|--------------------|--------|--------|
| Product | | Height | Weight |
| Part No. | Description | Meters | Kg |
| AC0300 | Adapter for Castor | 0.25 | 4.24 |

RINGLOCK

Bay Braces

BAY BRACES

Bay Braces are used for the lateral bracing of Ringlock scaffolds. They can also be used as compression and tension members for cantilevers/spurs, transmitting loads back into the main scaffold structure.



| Diagonal Bay Brace | | | |
|--------------------|----------------|------------|--------|
| Product | | Bay Length | Weight |
| Part No. | Description | Meters | Kg |
| DBB0733 | Bay Brace 2.0m | 0.73 | 7.55 |
| DBB1043 | Bay Brace 2.0m | 1.04 | 7.83 |
| DBB1093 | Bay Brace 2.0m | 1.09 | 7.86 |
| DBB1403 | Bay Brace 2.0m | 1.4 | 8.31 |
| DBB1573 | Bay Brace 2.0m | 1.57 | 8.54 |
| DBB2073 | Bay Brace 2.0m | 2.07 | 9.45 |
| DBB2573 | Bay Brace 2.0m | 2.57 | 10.46 |
| DBB3073 | Bay Brace 2.0m | 3.07 | 11.57 |



| Diagonal Bay Brace | | | |
|--------------------|----------------|------------|--------|
| Product | | Bay Length | Weight |
| Part No. | Description | Meters | Kg |
| DBB0734 | Bay Brace 1.5m | 0.73 | 5.9 |
| DBB1044 | Bay Brace 1.5m | 1.04 | 6.2 |
| DBB1094 | Bay Brace 1.5m | 1.09 | 6.7 |
| DBB1404 | Bay Brace 1.5m | 1.40 | 6.85 |
| DBB1574 | Bay Brace 1.5m | 1.57 | 7.68 |
| DBB2074 | Bay Brace 1.5m | 2.07 | 8.1 |
| DBB2574 | Bay Brace 1.5m | 2.57 | 9.3 |
| DBB3074 | Bay Brace 1.5m | 3.07 | 10.3 |

RINGLOCK

Brackets

SIDE/HOP-UP BRACKET

Side/Hop-Up Brackets are used to extend the working platform closer to the building structure in cases where the main scaffold cannot be erected directly next to the working face.



| Side Bracket O-Type | | | |
|---------------------|----------------|--------|--------|
| Product | | Width | Weight |
| Part No. | Description | Meters | Kg |
| HB039 | Side Bracket O | 0.39 | 4.94 |
| HB073 | Side Bracket O | 0.73 | 7.46 |



| Side Bracket U-Type | | | |
|---------------------|----------------|--------|--------|
| Product | | Width | Weight |
| Part No. | Description | Meters | Kg |
| HBU039 | Side Bracket U | 0.39 | 4.83 |
| HBU073 | Side Bracket U | 0.73 | 7.47 |

RINGLOCK

Girders/Spigot Adapters

LATTICE GIRDER, NO SPIGOT 0.5m

The Lattice Girder is a horizontal member of Ringlock scaffolding. It allows for bridging over large spans ranging from 5.14m to 7.7m.



| Lattice Girder, No Spigot 0.5m | | | |
|--------------------------------|----------------|--------|--------|
| Product | | Length | Weight |
| Part No. | Description | Meters | Kg |
| LG2576 | 0.5m No Spigot | 2.57 | 28 |
| LG3076 | 0.5m No Spigot | 3.07 | 32 |
| LG5146 | 0.5m No Spigot | 5.14 | 52 |
| LG6146 | 0.5m No Spigot | 6.14 | 64 |
| LG7716 | 0.5m No Spigot | 7.7 | 82 |

SPIGOT ADAPTER CLAMP FOR GIRDERS

Spigot Adapter Clamps allow for the connection of Ringlock Standards at intermediate locations along the length of O-Type Ledgers, Truss Ledegers and Girders.



| Lattice Girder Spigot Adapter Clamp | | |
|-------------------------------------|----------------------|--------|
| Product | | Weight |
| Part No. | Description | Kg |
| LGS07 | Spigot Adapter Clamp | 1.8 |



| Spigot Adapter Clamp | | |
|----------------------|------------------------|--------|
| Product | | Weight |
| Part No. | Description | Kg |
| SA07 | Spigot Adapter Clamp | 1.86 |
| USA07 | U Spigot Adapter Clamp | 1.8 |

RINGLOCK

Ledger/Transoms U-Type

LEDGER U-TYPE

The Ledger U-Type is the horizontal member of Ringlock scaffolding. It provides horizontal support for Ringlock Planks.



| U Ledger/Transom | | | |
|------------------|-------------|--------|--------|
| Product | | Length | Weight |
| Part No. | Description | Meters | Kg |
| UL0392 | Ledger u | 0.39 | 1.99 |
| UL0732 | Ledger u | 0.73 | 3.17 |

REINFORCED LEDGER/TRANSOM U-TYPE

The Reinforced Ledger is a reinforced horizontal member of the Ringlock Scaffolding. It provides support to Ringlock Planks at longer spans between verticals.



| U Reinforced Ledger/Transom | | | |
|-----------------------------|---------------|--------|--------|
| Product | | Length | Weight |
| Part No. | Description | Meters | Kg |
| ULR1092 | Ledger u type | 1.09 | 6.48 |
| ULR1402 | Ledger u type | 1.40 | 8.2 |
| ULR1572 | Ledger u type | 1.57 | 9.3 |

TRUSS LEDGER/TRANSOM U-TYPE

Truss Ledgers O-Type have been value engineered to enable higher service loads to the scaffold than could be applied using traditional ledgers.



| U Truss Ledger/Transom | | | |
|------------------------|----------------|--------|--------|
| Product | | Length | Weight |
| Part No. | Description | Meters | Kg |
| UTL1402 | Truss Ledger U | 1.40 | 9 |
| UTL1572 | Truss Ledger U | 1.57 | 10.8 |
| UTL2072 | Truss Ledger U | 2.07 | 14.3 |
| UTL2572 | Truss Ledger U | 2.57 | 17.7 |
| UTL3072 | Truss Ledger U | 3.07 | 21.4 |

RINGLOCK

Transom



LEDGER TO PLANK TRANSOM O-TYPE

The Ledger to Plank Transom O-Type is used where a ladder access opening is required on the side of the access platform.

| Ledger To Plank Transom | | | |
|-------------------------|--------------------|--------|--------|
| Product | | Length | Weight |
| Part No. | Description | Meters | Kg |
| LPT0322 | Ledger to plank 01 | 0.32 | 3.46 |
| LPT0642 | Ledger to plank 02 | 0.64 | 4.3 |
| LPT0962 | Ledger to Plank 03 | 0.96 | 5.62 |

PLANK TO PLANK TRANSOM O-TYPE

The Plank to Plank Transom O-Type is used when an opening is required in the middle of a platform such as a column or pipework that may pass through the working platform.



| Plank To Plank Transom | | | |
|------------------------|-------------------|--------|--------|
| Product | | Length | Weight |
| Part No. | Description | Meters | Kg |
| PPT0322 | Plank to plank 01 | 0.32 | 3.69 |
| PPT0642 | plank to plank 02 | 0.64 | 4.68 |
| PPT0962 | Plank to Plank 03 | 0.96 | 5.60 |

MID TRANSOM O-TYPE

The Mid Transom is designed to create a transom at the plank level anywhere inside of a bay by straddling the outer Ledgers/Transoms of a bay.



| Mid Transom O-Type | | | |
|--------------------|---------------|--------|--------|
| Product | | Length | Weight |
| Part No. | Description | Meters | Kg |
| MT0392 | Mid Transom O | 0.39 | 2.73 |
| MT0732 | Mid Transom O | 0.73 | 3.9 |
| MT1042 | Mid Transom O | 1.04 | 4.95 |
| MT1092 | Mid Transom O | 1.09 | 5.13 |
| MT1402 | Mid Transom O | 1.4 | 6.28 |
| MT1572 | Mid Transom O | 1.57 | 6.82 |
| MT2072 | Mid Transom O | 2.07 | 8.49 |
| MT2572 | Mid Transom O | 2.57 | 10.1 |
| MT3072 | Mid Transom O | 3.07 | 12.2 |

RINGLOCK

Ledgers

LEDGER O-TYPE

The Ledger O-Type is the horizontal member of Ringlock scaffolding. It provides horizontal support to Ringlock planks. They can also be used as mid rail and top or hand Guardrail.



| Ledger O-Type | | | |
|---------------|---------------|--------|--------|
| Product | | Length | Weight |
| Part No. | Description | Meters | Kg |
| SL0152 | Ledger O Type | 0.15 | 1.17 |
| SL0392 | Ledger O Type | 0.39 | 2.14 |
| SL0732 | Ledger O Type | 0.73 | 3.39 |
| SL1042 | Ledger O Type | 1.04 | 4.31 |
| SL1092 | Ledger O Type | 1.09 | 4.7 |
| SL1402 | Ledger O Type | 1.40 | 5.54 |
| SL1572 | Ledger O Type | 1.57 | 6.45 |
| SL2072 | Ledger O Type | 2.07 | 8.2 |
| SL2572 | Ledger O Type | 2.57 | 9.9 |
| SL3072 | Ledger O Type | 3.07 | 11.6 |

TRUSS LEDGER O-TYPE

The Truss Ledger O-Type has been engineered to enable higher service loads to the scaffold compared to traditional Ledgers. The reinforcing tube and stiffener plates support the top tube and provide strength while maintaining lightness.

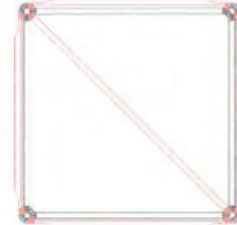


| Truss Ledger O-Type | | | |
|---------------------|----------------|--------|--------|
| Product | | Length | Weight |
| Part No. | Description | Meters | Kg |
| TL1401 | Truss Ledger O | 1.40 | 9.3 |
| TL1571 | Truss Ledger O | 1.57 | 10.1 |
| TL2071 | Truss Ledger O | 2.07 | 13.9 |
| TL2571 | Truss Ledger O | 2.57 | 16.6 |
| TL3071 | Truss Ledger O | 3.07 | 21.2 |

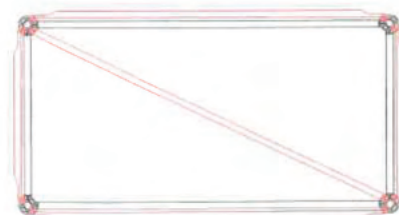
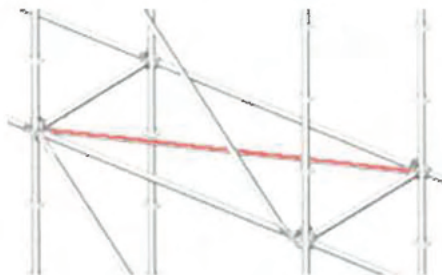
O-TYPE

Diagonal, Horizontal Ledger

| DIAGONAL, HORIZONTAL LEDGER | | | |
|-----------------------------|-------------------|--------|--------|
| Product | | Length | Weight |
| Part No. | Description | Meters | Kg |
| DHL 109 | L1090mm x W1090mm | 1.54 | 6.3 |
| DHL 157 | L1570mm x W1570mm | 2.22 | 8.8 |
| DHL 207 | L2070mm x W2070mm | 2.93 | 11.4 |
| DHL 357 | L2570mm x W2570mm | 3.64 | 14.00 |
| DHL 307 | L3070mm x W3070mm | 4.34 | 15.7 |



| DIAGONAL, HORIZONTAL LEDGER | | | |
|-----------------------------|-------------------|--------|--------|
| Product | | Length | Weight |
| Part No. | Description | Meters | Kg |
| DHL 157.109 | L1570mm x w1090mm | 1.91 | 7.0 |
| DHL 207.109 | L2070mm x W1090mm | 2.34 | 8.4 |
| DHL 257.109 | L2570mm x W1090mm | 2.79 | 9.9 |
| DHL 307.109 | L3070mm x W1090mm | 3.26 | 11.00 |



WORK PLATFORMS

Planks

STEEL PLANK O-TYPE

Steel Planks are used to form the working platform. The number of Steel Planks used determines the width of the platform. They span the length of the bay and hook onto the supporting Ledger/Transom. They come in widths of either 190mm or 320mm.



| Steel Plank O-Type 320mm | | | |
|--------------------------|-----------------|--------|--------|
| Product | | Length | Weight |
| Part No. | Description | Meters | Kg |
| P032-073 | Steel Plank 320 | 0.73 | 7.2 |
| P032-109 | Steel Plank 320 | 1.09 | 9.63 |
| P032-140 | Steel Plank 320 | 1.40 | 11.76 |
| P032-157 | Steel Plank 320 | 1.57 | 12.9 |
| P032-207 | Steel Plank 320 | 2.07 | 16.3 |
| P032-257 | Steel Plank 320 | 2.57 | 19.8 |
| P032-307 | Steel Plank 320 | 3.07 | 23.3 |



| Steel Plank O-Type 190mm | | | |
|--------------------------|-----------------|--------|--------|
| Product | | Length | Weight |
| Part No. | Description | Meters | Kg |
| P019-073 | Steel Plank 190 | 0.73 | 5.22 |
| P019-109 | Steel Plank 190 | 1.09 | 7.09 |
| P019-140 | Steel Plank 190 | 1.40 | 8.8 |
| P019-157 | Steel Plank 190 | 1.57 | 9.59 |
| P019-207 | Steel Plank 190 | 2.07 | 12.12 |
| P019-257 | Steel Plank 190 | 2.57 | 14.6 |
| P019-307 | Steel Plank 190 | 3.07 | 17.36 |

WORK PLATFORMS

Planks

STEEL PLANK U-TYPE

U-Type Steel Planks are similar to the O-Type Steel Planks but connect to U-Ledgers/Transoms instead of the O-Type.



| Steel Plank U-Type 320mm | | | |
|--------------------------|-----------------|--------|--------|
| Product | | Length | Weight |
| Part No. | Description | Meters | Kg |
| PU032-073 | Steel Plank 320 | 0.73 | 6.78 |
| PU032-109 | Steel Plank 320 | 1.09 | 8.74 |
| PU032-140 | Steel Plank 320 | 1.40 | 10.8 |
| PU032-157 | Steel Plank 320 | 1.57 | 12.07 |
| PU032-207 | Steel Plank 320 | 2.07 | 15.2 |
| PU032-257 | Steel Plank 320 | 2.57 | 19.4 |
| PU032-307 | Steel Plank 320 | 3.07 | 22.17 |



| Steel Plank U-Type 190mm | | | |
|--------------------------|-----------------|--------|--------|
| Product | | Length | Weight |
| Part No. | Description | Meters | Kg |
| PU019-073 | Steel Plank 190 | 0.73 | 5.16 |
| PU019-109 | Steel Plank 190 | 1.09 | 6.88 |
| PU019-140 | Steel Plank 190 | 1.40 | 8.56 |
| PU019-157 | Steel Plank 190 | 1.57 | 9.88 |
| PU019-207 | Steel Plank 190 | 2.07 | 12.5 |
| PU019-257 | Steel Plank 190 | 2.57 | 15.56 |
| PU019-307 | Steel Plank 190 | 3.07 | 18.45 |

WORK PLATFORMS

Toeboards

INTERLOCKING TOEBOARDS

Interlocking Toeboards are designed to enclose the bay at the plank level, preventing small tools, debris and other items from falling off the platform.



| Interlocking Toeboard 24mm | | | |
|----------------------------|-------------------|--------|--------|
| Product | | Length | Weight |
| Part No. | Description | Meters | Kg |
| TB073 | Interlock T Board | 0.73 | 2.34 |
| TB104 | Interlock T Board | 1.04 | 3.08 |
| TB109 | Interlock T Board | 1.09 | 3.28 |
| TB140 | Interlock T Board | 1.40 | 3.97 |
| TB157 | Interlock T Board | 1.57 | 4.38 |
| TB207 | Interlock T Board | 2.07 | 5.54 |
| TB257 | Interlock T Board | 2.57 | 6.92 |
| TB307 | Interlock T Board | 3.07 | 8.22 |

TOE BOARD RETAINING CLAMP

The Toe Board Retaining Clamps are used to secure the toeboard during harsh weather conditions to prevent upward movement.



| Toe board Retaining Clamp | | | |
|---------------------------|-----------------|--------|--------|
| Product | | Length | Weight |
| Part No. | Description | Meters | Kg |
| TBR 07 | Retaining Clamp | 0.08 | 0.83 |

INFILL PLANK

Infill Planks are designed to fill any unwanted gaps between planks or bays to provide a continuous working platform.



| Infill Plank 190mm | | | |
|--------------------|------------------|--------|--------|
| Product | | Length | Weight |
| Part No. | Description | Meters | Kg |
| IP019-073 | Infill Plank 190 | 0.73 | 3.37 |
| IP019-109 | Infill Plank 190 | 1.09 | 5.04 |
| IP019-140 | Infill Plank 190 | 1.40 | 6.47 |
| IP019-157 | Infill Plank 190 | 1.57 | 6.58 |
| IP019-207 | Infill Plank 190 | 2.07 | 9.13 |
| IP019-257 | Infill Plank 190 | 2.57 | 11.3 |
| IP019-307 | Infill Plank 190 | 3.07 | 13.6 |

ACCESSORIES

Clamps

ROSETTE CLAMP

The Rosette Clamp is used to add a rosette at any point on a vertical standard or tube.



| Rosette Clamp | | |
|---------------|----------------------|--------|
| Product | | Weight |
| Part No. | Description | Kg |
| RS048 | Rosette Clamp-T Bolt | 1.19 |

SWIVEL ADAPTER CLAMP

The Swivel Adapter Clamp is designed to easily join a scaffold tube to the rosette of a Ringlock Scaffold to produce variety of angles.



| Swivel Adapter Clamp | | |
|----------------------|----------------------|--------|
| Product | | Weight |
| Part No. | Description | Kg |
| SAC048 | Swivel Adapter Clamp | 1.6 |

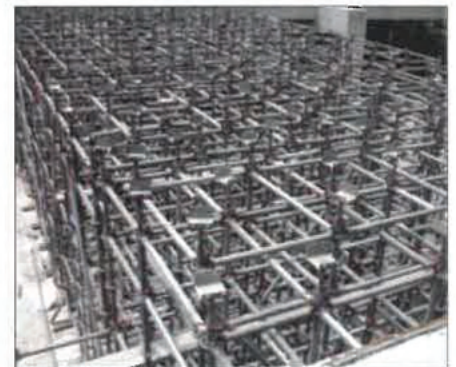
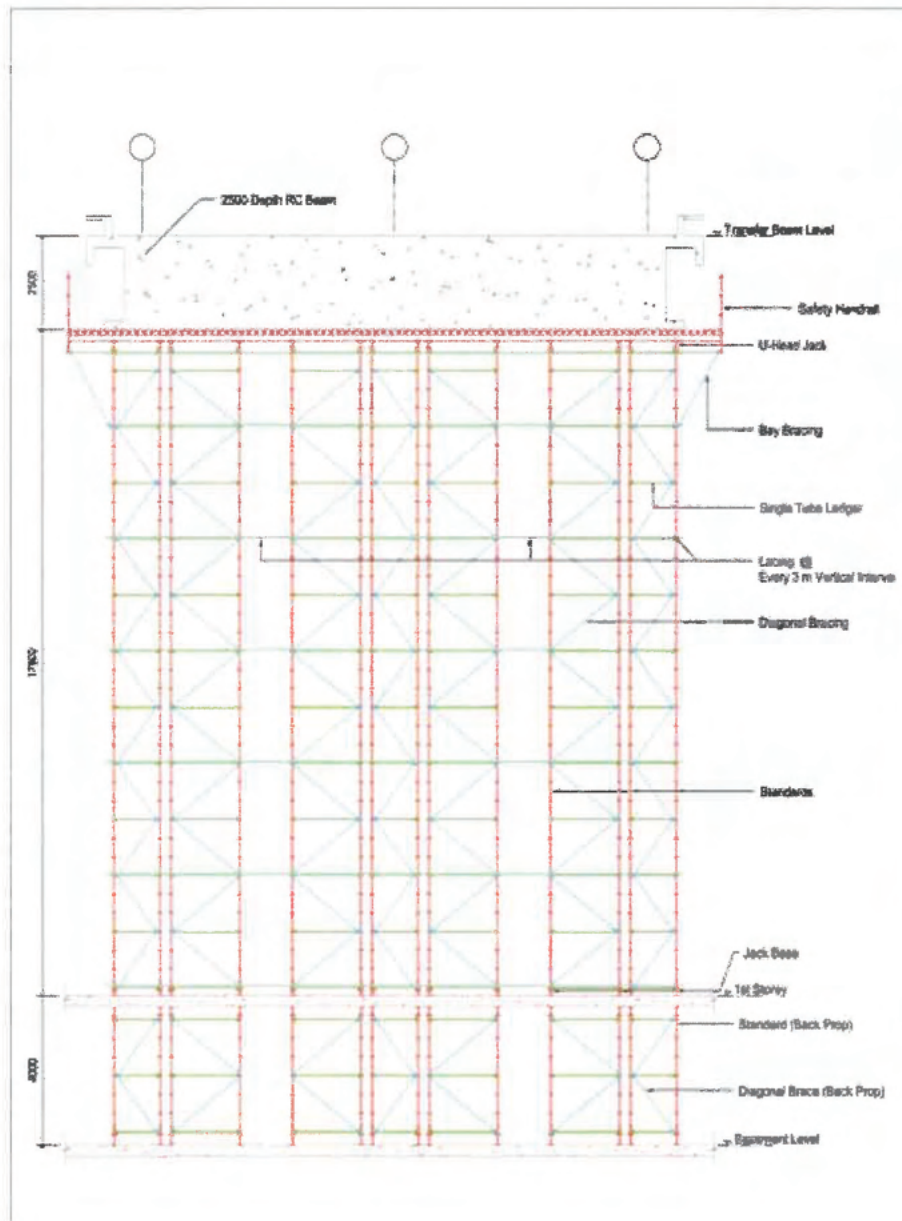
RIGHT ANGLE ADAPTER CLAMP

The Right Angle Adapter Clamp is designed to easily join a scaffold tube directly to the Ringlock standard to create 90 degree angles.

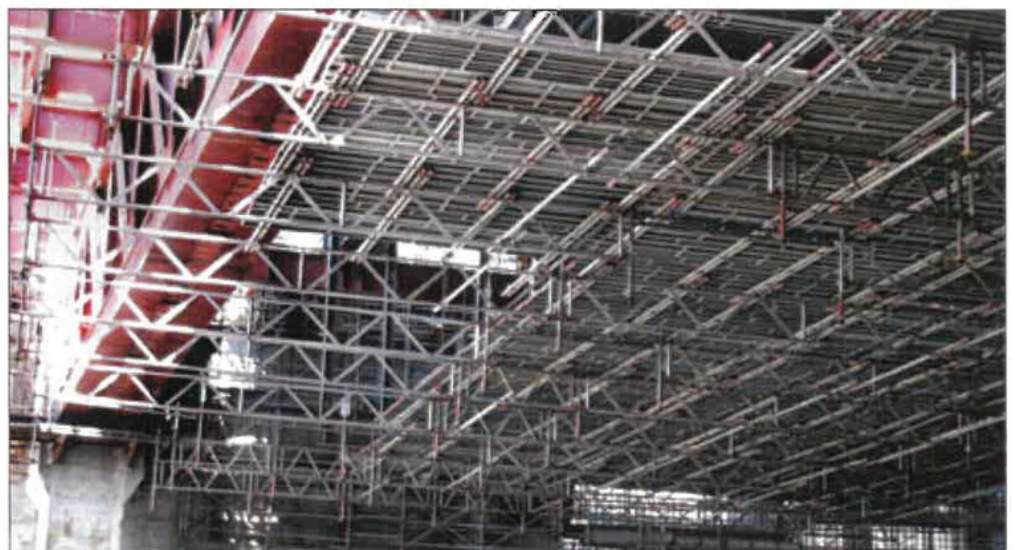


| Right Angle Adapter Clamp | | |
|---------------------------|---------------------------|--------|
| Product | | Weight |
| Part No. | Description | Kg |
| RAC048 | Right Angle Adapter Clamp | 1.56 |

SHORING SCAFFOLD



CANTILEVER SCAFFOLD





明光集團
BENG KUANG GROUP



NEXUS

SEALAND TRADING PTE LTD

164 Gul Circle, JTC Space @Gul, #01-08
Singapore 629621

Tel: +65 6898 2345 **Fax:** +65 6898 2712

Website: www.bkmgrou.com.sg **Email:** sales@bkmgrou.com.sg